

XTA Electronics Ltd.

The Design House
 Vale Business Park
 Worcester Road
 Stourport-on-Severn
 Worcs. DY13 9BZ. England
 Tel: 01299 879977 (Intl. +44 1299 879977)
 Fax: 01299 879969 (Intl. +44 1299 879969)

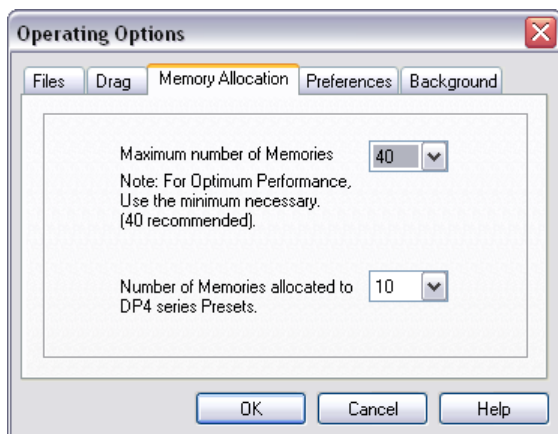


...clone a unit using AudioCore

Audiocore may be used to copy settings from one unit to another unit of the same type when a PCMCIA card is unavailable. The procedure outlined below assumes basic familiarity with Windows and with AudioCore itself.

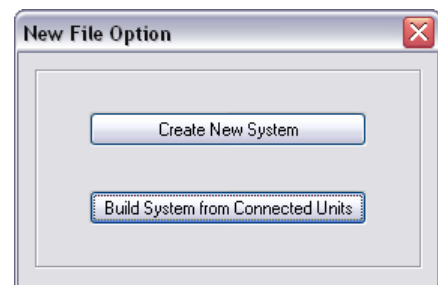
Getting the settings from the original unit.

- ◆ Start AudioCore and plug the unit into the PC, with the unit ID set to 1.
- ◆ Make sure the correct COM port has been selected in the Remote menu, and that the baud rate of the port matches that selected on the DP itself.
- ◆ Before continuing, make sure that AudioCore is set to work with the number of memories you require. This option is set under the 'File' > 'Options' and then the 'Memory Allocation' tab.

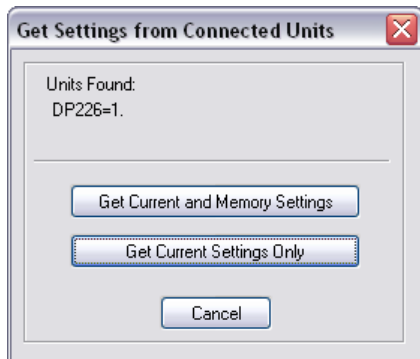


- ◆ Choose the number of memories you require to upload to the PC. The number of presets doesn't matter in this case as whilst they can be imported into the software, they cannot be exported back to a unit as they reside in Flash and can only be loaded through a preset "bin" file dump.

- ◆ Click on the  New button, on the far left of the toolbar, or select File > New from the menus.



- ◆ Choose the option to 'Build System from Connected Units'.



- ◆ After scanning to find the unit, a window will appear offering several connection options. Choose 'Get Current and Memory Settings'. This will copy all the settings from the unit to the computer.

- ◆ Save the system at this point by choosing 'File' > 'Save' and completing the operation in the standard manner.

Sending the settings to the other unit.

- ◆ If Audiocore is not already open, start it and connect the other unit in place of the original. Make sure the file containing the settings of the original unit has been opened (File > Open and then choose the file as required). (If you have not closed it in between getting the setting form the original unit and this stage then ignore this point)

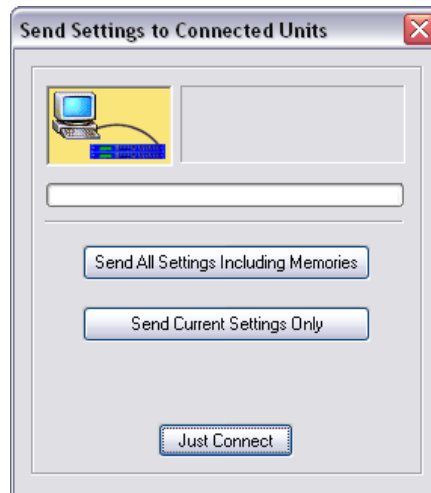
- ◆ Check that the unit ID is set to number 1, with the baud rates matching etc...

- ◆ Make sure Audiocore is offline – the



indicator should be grey – if not click the

- ◆ Click on the On/Off Line button again to go online. If the unit is connected up correctly you should see the following window offering several options:



Press "Send All Settings Including Memories" To copy the settings from the PC into the unit!

Any questions about this Application Note?

Ring XTA on the number at the top of this page, or email waring@xta.co.uk.